

# HOMWORK AT CARDINAL HEENAN



CARDINAL HEENAN  
CATHOLIC HIGH SCHOOL

# *Headteacher's* **WELCOME**

At Cardinal Heenan, we aim to inspire excellence and foster confidence in our students through every aspect of our work. Our rich curriculum achieves these goals in the classroom but extends into independent learning through homework.

Homework provides you, parents and guardians, with an insight into classroom learning and practices that will progress your child throughout their time here with us, as well as beyond.

We prepare our students to be lifelong learners who know the value of hard work so they can be the person that God calls them to be. We achieve this through the homework we set.

The school community comes together to teach our students the benefits of regular homework. We support each individual so they have every chance of success, both academically and through the habits they form that will stand them in good stead for the future.



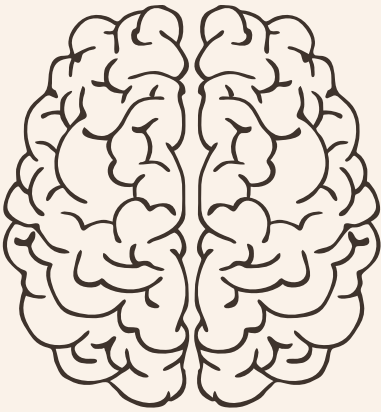
This booklet is a step towards informing you of the purpose, practices and careful thought that goes into each piece of homework set by each subject.

Mr D Kelly  
Headteacher

*"Education is a passport to the future,  
for tomorrow belongs to those who prepare for it today"*  
*Malcom X*

Why

# WE SET HOMEWORK



## STRENGTHENS MEMORY

Connections between learning memories get stronger each time something is practised and students will find it easier to remember important facts. Students will get to lessons feeling able to build on their knowledge.



## BUILDS CONFIDENCE

Doing their homework well and regularly makes students feel more confident in lessons and they will start doing better in assessments. They will feel less uncertain and can link new facts to previous memories better.



## BUILD GOOD HABITS

Consistently doing their homework to the best of their ability will help them get more organised, plan their time well, be resourceful, and learn how to practise their learning. These are good lifelong habits!

*Homework*

# AT CARDINAL HEENAN

## ROUTINE



We set homework regularly to our students

## PRACTISE



The homework we set helps students practise and extend their learning

## LINKED TO CLASSWORK



The homework we set relates to what we are doing in lessons

## RETRIEVAL



The homework we set helps our students retrieve knowledge from memory

## SUPPORT



When we set homework, we provide guidance and support to help our students succeed

## RECOGNISE



We recognise the effort put in by our students and encourage great quality homework

*How*

# YOU CAN HELP WITH HOMEWORK

## TALK ABOUT HOMEWORK

Discuss what homework your child gets and look through their planner. Ask them why this homework is important and how they know.

Homework is a way for you to be aware of the learning taking place in the classroom. Discussing homework often with your child keeps you informed but also helps your child value independent study and the learning process.



## SUPPORT BUT DON'T HELP

Research tells us that students who do their homework by themselves do approximately 10% better than those who get help from their parents.

Support can be in the form of making sure your child has a quiet space to work in, providing encouragement and reminding your child that the homework will improve their confidence, memory and achievement.

## HELP YOUR CHILD SELF-REGULATE

Your child can self-regulate if they are organised and if they try to find solutions when stuck. Encourage your child to have all the necessary resources, such as a calculator or their exercise book, near them when they do their homework. If they are stuck, remind them that they should spend some time getting unstuck and not give up. If they are still stuck, they should contact their teacher in good time.



# RELIGIOUS STUDIES

---



## GENERAL TYPES OF HOMEWORK

Homework is set primarily through homework booklets, which have a range of practice exam questions, retrieval and other extended writing tasks. Teachers may set additional homework to further support student understanding.

## HOW OFTEN IS IT SET?

Homework is set fortnightly for both KS3 and KS4, although teachers may set additional tasks if they wish to.

## HOW WE SUPPORT OUR STUDENTS

Homework tasks are modelled in lessons before being set. Some tasks have accompanying QR codes which can be viewed using smart phones, or instructions to access the sources are provided. Students can use writing frames if needed.

## HOW WE FEEDBACK ON HOMEWORK

Teachers feedback on homework through model answers, peer marking and quizzing. Teachers will meet regularly to evaluate homework tasks and edit them throughout the year to best support students.

**Curriculum Leader**

Mr J Tunnecliff  
jtf@cardinalheenan.om



# ART

---



## GENERAL TYPES OF HOMEWORK

A variety of homework tasks are set at KS3 and KS4. The aim of these tasks is to develop and refine key skills such as tonal application, observational skills and collection of research ideas. Homework tasks include researching themes and completing key skills begun in lessons

## HOW OFTEN IS IT SET?

At KS3 and KS4, homework is set once a fortnight.

## HOW WE SUPPORT OUR STUDENTS

There is Art Club at lunchtime where students can speak with their teacher on a more individual basis and have access to specialist equipment. The Art department also lends equipment to students.

## HOW WE FEEDBACK ON HOMEWORK

Homework is marked using a traffic light method (red, amber, green) and success criteria. The idea is that students see which areas require improvement and can develop accordingly.

**Curriculum Leader**  
Mrs S Atkinson  
[san@cardinalheenan.com](mailto:san@cardinalheenan.com)



# BUSINESS



## GENERAL TYPES OF HOMEWORK

Homework is typically in the form of retrieval tasks, report writing, preparation for new topics or coursework.

These pieces allow students to recall important knowledge and practise writing about current affairs.

## HOW OFTEN IS IT SET?

Year 9 students are set homework once a fortnight in the form of a booklet.

Years 10 and 11 students are set homework once a week.

## HOW WE SUPPORT OUR STUDENTS

In Year 9, students are given a booklet that follows a set format. The use of the booklet is modelled at the beginning of term and when homework is set.

In Years 10 and 11, retrieval is practised in lessons so students are familiar with what they need to do.

## HOW WE FEEDBACK ON HOMEWORK

Homework is reviewed in lessons. Teachers mark or students self- or peer-assess work.

Year 10 / 11 mini assessment success is also used to feedback the effectiveness of homework to students.

**Curriculum Leader**

Miss C McGrellis  
[cms@cardinalheenan.com](mailto:cms@cardinalheenan.com)





# COMPUTER STUDIES

---



## GENERAL TYPES OF HOMEWORK

Students are set analysis, evaluation or knowledge retrieval tasks routinely. Homework may also include subject knowledge investigations. For the KS4 Computer Science course, students are set Smart Revise questions.

## HOW OFTEN IS IT SET?

At both KS3 and KS4, homework is set once a fortnight.

## HOW WE SUPPORT OUR STUDENTS

At KS3, homework is modelled in lessons. For analysis homework tasks, scaffolding (such as sentence starters or examples) is provided.

At KS4, links to previous lessons, tutorials on YouTube or loom videos are provided on Google Classroom.

## HOW WE FEEDBACK ON HOMEWORK

Homework is reviewed and discussed in lessons following submission.

Achievement points are given to students who submit good quality work.

**Curriculum Leader**  
Mr E Hartwell  
[ehl@cardinalheenan.com](mailto:ehl@cardinalheenan.com)



# DESIGN AND TECHNOLOGY

---



## GENERAL TYPES OF HOMEWORK

A variety of homework tasks are set, including finding/collecting information or images, analysis of class work, practise of skills like photography, research questions, continuation of class work, bringing in ingredients, and revision.

## HOW OFTEN IS IT SET?

At both KS3 and KS4, homework is set once a fortnight.

## HOW WE SUPPORT OUR STUDENTS

In the homework booklets, web links to exact homework and support documents are included.

The CGP books link directly to learning tasks. Teachers will demonstrate tasks further, if asked by students in sufficient time.

## HOW WE FEEDBACK ON HOMEWORK

Homework is reviewed through verbal feedback or via PINS marking. Achievement points are given to students who submit good quality work.

**Curriculum Leader**  
Mr M Richmond  
[mri@cardinalheenan.com](mailto:mri@cardinalheenan.com)



# ENGLISH

---



## GENERAL TYPES OF HOMEWORK

Homework may be set on Educake (a self-quizzing website for which the school provide students with logins) or from a homework grid found in student books, with worksheets to support students.

In addition, a booklet of GCSE practice questions is set at KS4.

## HOW OFTEN IS IT SET?

Educake is set once a fortnight at KS3 and once a week at KS4.

A homework grid task is set once a week.

Overall, homework is set 3 times a fortnight at KS3 and twice a week at KS4.

## HOW WE SUPPORT OUR STUDENTS

Faded scaffolding and guidance is provided to students in lessons. Tasks are modelled and sometimes started in lessons to allow students an opportunity to get accustomed to the task. Success criteria are provided for written tasks.

## HOW WE FEEDBACK ON HOMEWORK

Educake tasks are self-marked. Other homework tasks are marked in lessons, either by self- and/or peer-assessment.

**Curriculum Leader**

Mrs H McMinn

[hmn@cardinalheenan.com](mailto:hmn@cardinalheenan.com)



# GEOGRAPHY

---



## GENERAL TYPES OF HOMEWORK

Homework includes Educake quizzes, worksheets comprising questions from previous learning and glossaries. Alternative homework tasks could include reading extracts from books and magazines, researching a country or place and survival guides, amongst others.

## HOW OFTEN IS IT SET?

Homework is set once a fortnight for KS3. While this is often the same for KS4, teachers may set additional homework to promote the retrieval of knowledge leading towards GCSEs.

## HOW WE SUPPORT OUR STUDENTS

Homework tasks are discussed and modelled in class to ensure students know the expectations. Students are reminded of homework prior to the due date. Teachers base the majority of homework questions on content taught in lessons with exceptions for challenging questions.

## HOW WE FEEDBACK ON HOMEWORK

Homework is reviewed by the classroom teacher and then appropriate feedback in lessons is delivered. Achievement points are given for outstanding homework. Students also complete peer- and self-assessments of homework tasks.

**Curriculum Leader**

Mr L Jones

[ljs@cardinalheenan.com](mailto:ljs@cardinalheenan.com)



# HISTORY



## GENERAL TYPES OF HOMEWORK

Homework includes revision for key vocabulary assessments, GCSE exam question practice, research based tasks and short worksheets.

## HOW OFTEN IS IT SET?

At KS3, homework is set approximately 3 times a half term.

At KS4, homework is set once a week.

## HOW WE SUPPORT OUR STUDENTS

Teachers reinforce ways of memorising facts and carry out pre tests.

The same routine is used for each type of homework. GCSE Homework tasks are usually set after completing a similar task in class and how to research is modelled to students.

## HOW WE FEEDBACK ON HOMEWORK

GCSE exam questions are marked by the teacher and returned with whole class feedback. Other homework tasks are reviewed in lessons.

**Curriculum Leader**

Mr K Wild

[kwd@cardinalheenan.com](mailto:kwd@cardinalheenan.com)



# LANGUAGES

---



## GENERAL TYPES OF HOMEWORK

Homework includes written tasks to develop and embed new language, online tasks on [sentencebuilders.com](http://sentencebuilders.com) and [Pearsonactivelearn.com](http://Pearsonactivelearn.com), vocabulary self-quizzing, and cultural study tasks.

## HOW OFTEN IS IT SET?

At KS3, 30-minute tasks are set once a week.

At KS4, 45-minute tasks are set once a week.

## HOW WE SUPPORT OUR STUDENTS

Examples, models and success criteria are provided in lessons. Self-quizzing is also practised in the classroom. Routines are discussed including when students should sit down to do homework. Teachers also remind students about homework.

## HOW WE FEEDBACK ON HOMEWORK

Homework is checked and feedback is given in lessons. Evidence of self-quizzing is also checked and achievement points are given to students submitting good quality homework.

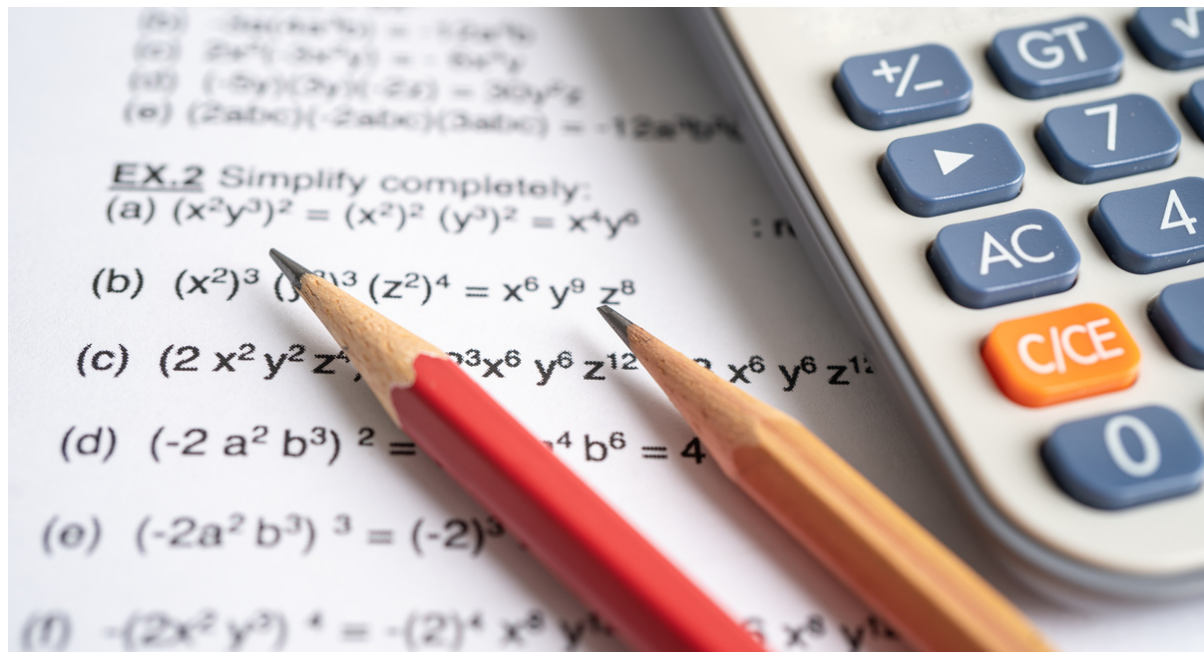
**Curriculum Leader**

Mrs H Stanton

[hsn@cardinalheenan.com](mailto:hsn@cardinalheenan.com)



# MATHS



## GENERAL TYPES OF HOMEWORK

Homework tasks include those set on Mathswatch or Mymaths, a topic worksheet or a retrieval worksheet.

## HOW OFTEN IS IT SET?

Homework is set once a week at both KS3 and KS4.

## HOW WE SUPPORT OUR STUDENTS

Both Mathswatch and Mymaths have built-in support materials. A whole lesson is dedicated to modelling how to use these resources. With topic and retrieval worksheets, questions are related to lesson content and teachers model how to answer these.

## HOW WE FEEDBACK ON HOMEWORK

Homework is either marked online or by the teacher, if on a worksheet. Online feedback is available through Mathswatch, and informs lessons to come, depending on how the class has done. Achievement points are given for regular outstanding homework.

**Curriculum Leader**

Mr J Smith

[jsh@cardinalheenan.com](mailto:jsh@cardinalheenan.com)



# MUSIC

---



## GENERAL TYPES OF HOMEWORK

Homework tasks include revision from knowledge organisers, key vocabulary revision, listening and analysing, and music theory activities that are related to current topics.

## HOW OFTEN IS IT SET?

Homework is set once every 4 weeks.

## HOW WE SUPPORT OUR STUDENTS

Homework tasks are modelled in lessons and similar questions are set in the classroom. Tasks are explained carefully as well so students are aware of what to do.

## HOW WE FEEDBACK ON HOMEWORK

Homework is reviewed by self- or peer-assessment. Homework is discussed in lessons and achievement points are given to students who submit good quality homework.

**Curriculum Leader**

Miss T Pendred  
tpd@cardinalheenan.com







# SCIENCE

---



## GENERAL TYPES OF HOMEWORK

At both KS3 and KS4, practise questions on worksheets are set routinely.

In addition, specific revision tasks and online homework may be set through Educake, Seneca Learning or Carousel Learning.

## HOW OFTEN IS IT SET?

Homework is set approximately once a week to all KS3 classes.

Homework is set approximately once a fortnight at KS4.

## HOW WE SUPPORT OUR STUDENTS

·Similar style tasks are done in lessons with discussions around how to best succeed at them. In lessons, students practise writing/drawing from memory. Useful websites and booklets are provided when appropriate.

## HOW WE FEEDBACK ON HOMEWORK

Feedback is provided either by self-assessment, teacher marking or verbal feedback given in lessons.

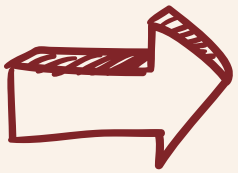
Achievement points are given to students who submit good quality homework.

**Curriculum Leader**

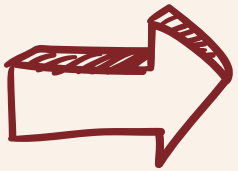
Mr R O'Flanagan  
ron@cardinalheenan.om



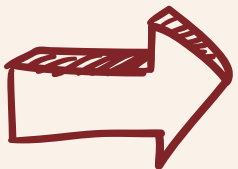
# USEFUL LINKS AND RESOURCES



Pages 13–15 of the Student Planner for information on homework



Pages 4–5 of the Student Planner for the Homework Timetable



<https://www.cardinalheenan.com/our-curriculum/homework/> for updated information on homework as well as subject-specific links

## CONTACT US

If you have any further questions, please don't hesitate to contact us.



**Homework Lead**

Dr J Castelino

[jco@cardinalheenan.com](mailto:jco@cardinalheenan.com)



**CARDINAL HEENAN**  
**CATHOLIC HIGH SCHOOL**